



WEBER
ENTEC

INCREASED EFFICIENCY ON BIOGAS PLANTS AND WWTP THROUGH ULTRASOUND DISINTEGRATION



WEBER ENTEC ULTRASOUND AT ENVIRONMENTAL SECTOR

- ▶ Founded in 2010
- ▶ Worldwide sales and support network
- ▶ > 200 installations in 17 countries
- ▶ Market leader at ultrasound disintegration



SELECTED CUSTOMERS



OVER 200 INSTALLATIONS
WORLDWIDE



Shell
Low Carbon Solutions
Biogas

nature
energy



ABWASSERVERBAND
ALTENRHEIN



NAWARO®
BioEnergie AG

BIO CIRC

enercity

agri.capital

swb

Haslachhof
Familie Wiggert

e.on

PUB
SINGAPORE'S
NATIONAL
WATER AGENCY

ATAGO
CORPORATION

KTG
Energie AG

OptiGas
BY NEF

TSK
TSUKISHIMA
KIKAI

渠務署
Drainage Services Department

(주) 성진엠텍
Sungjin M-Tec Co., Ltd.

KURITA

APPLICATION OF ULTRASOUND DISINTEGRATION



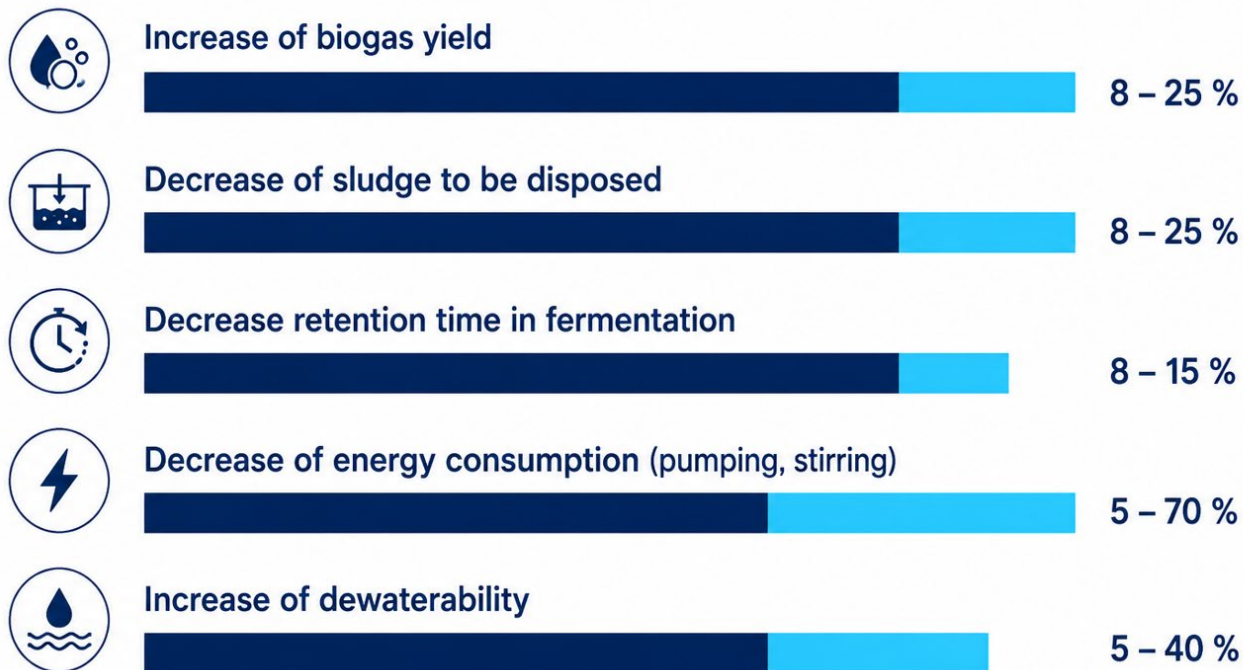
- ▶ Increase of biogas production
- ▶ Reduction of feed stock at equal performance
- ▶ Acceleration of organic degradation
- ▶ Consistent decrease of viscosity
- ▶ Reduction of pump- and stirring energy demand



- ▶ Increase of biogas production
- ▶ Reduction of sludge to be disposed
- ▶ Consistent decrease of viscosity
- ▶ Improved decanting
- ▶ Elimination of foam / filamentous bacteria

RANGE OF PERFORMANCE

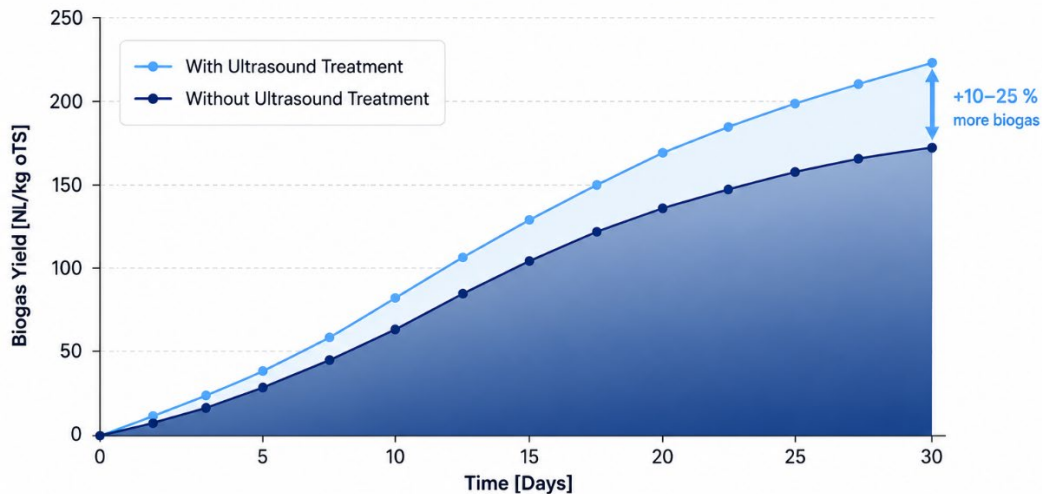
EFFECTS OF ULTRASOUND DISINTEGRATION



HIGHER GAS YIELD

Biogas Yield over 30 Days (BMP Test)

Ultrasound disintegration increases biogas yield.



+10-25 %
more biogas



Ultrasound disintegration increases biogas yield by 10–25 % and improves the economic efficiency of biogas plants.

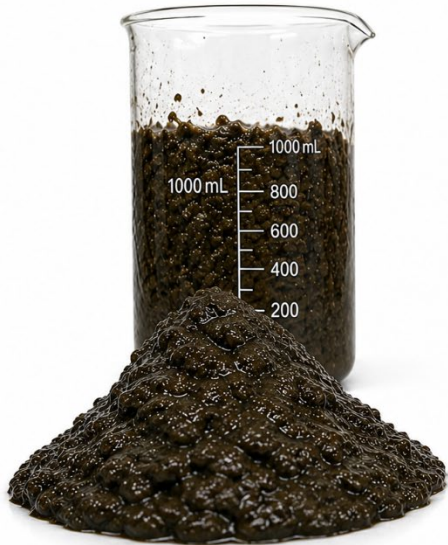
How ultrasound drives performance

- Increases effective biomass surface area for microbial activity.
- Improves contact between microbes and substrate, boosting mass transfer.
- Accelerates biological conversion (faster hydrolysis and downstream steps).
- Delivers higher gas yield from the same feedstock, or the same yield with less substrate.
- Supports processing of more challenging substrates by improving conversion kinetics.

REDUCED VISCOSITY



WEBER
ENTEC



BEFORE ULTRASOUND

High viscosity



AFTER ULTRASOUND

Reduced viscosity

After BioPush Treatment:

- ▶ Reduced viscosity
- ▶ Ultrasound improves dewaterability through cell lysis
- ▶ Improved flow characteristics
- ▶ Lower energy demand for pumping, stirring
- ▶ Increased biological stability
- ▶ Higher share of difficult substrates can be processed (e.g. grass, manure, etc)

IMPROVED DRAINABILITY



WEBER
ENTEC



- Ultrasound causes **cell lysis**
→ **Intracellular water** is released



- **Capillary water** is also liberated
→ Water is **less tightly bound**



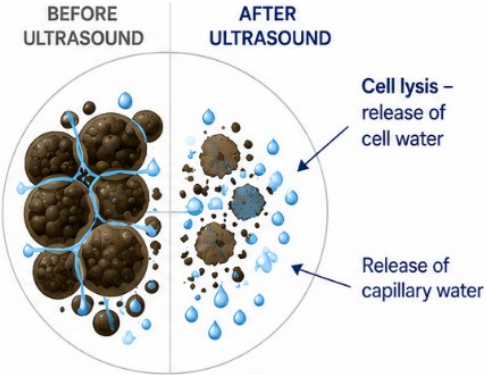
- **Improved floc structure** and drainability



- **Higher solids content**



- **Reduced sludge volume** and disposal costs



INTEGRATION AT DEWATERING PLANT

Usual
installation

3-5 % DS



Dewatering machine



25 % DS

Installation
with US

3-5 % DS



Ultrasound unit



Dewatering machine



37,5 % DS

50 % improvement

SIGNIFICANT CO₂ REDUCTION !



WEBER
ENTEC



Operating a biogas plant requires energy

- Stirrers
- Pumps
- Feeding
- Recirculation, etc.



Production of substrates requires energy



Substrates emit CO₂



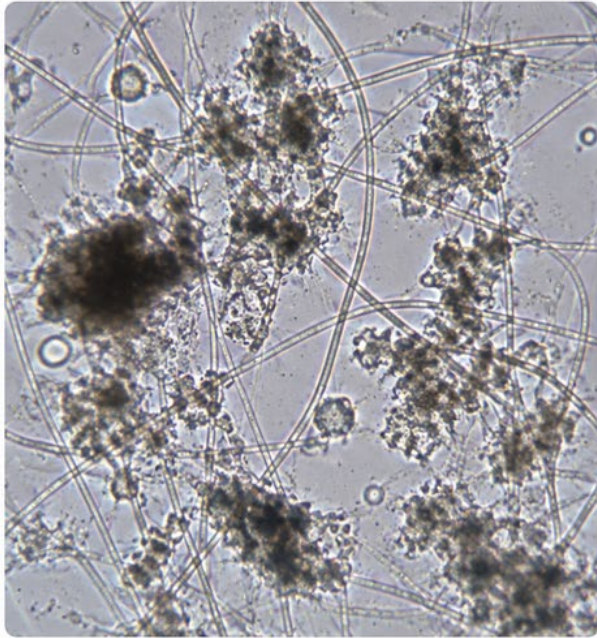
Disposal of the fermentation product requires energy



Ultrasound technology reduces energy demand at multiple points and significantly lowers CO₂ emissions.

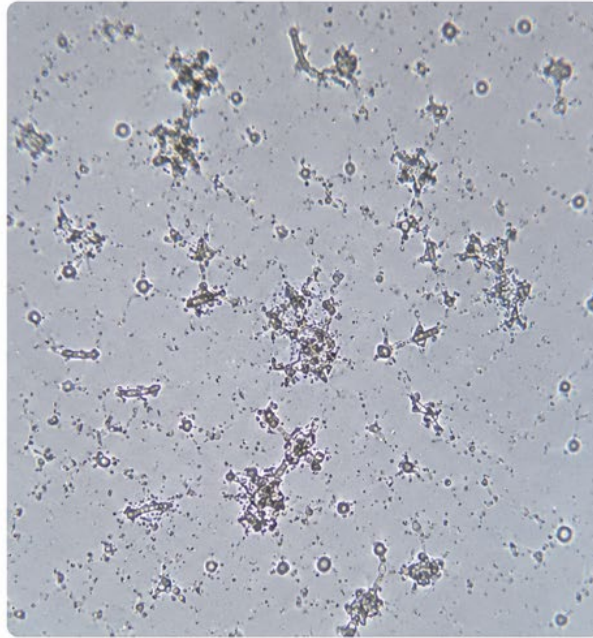
ELIMINATING FILAMENTOUS BACTERIA

BEFORE ULTRASOUND TREATMENT



Intact filamentous bacteria (e.g. *Microthrix parvicella*) cause foam formation and can lead to fermenter overflow.

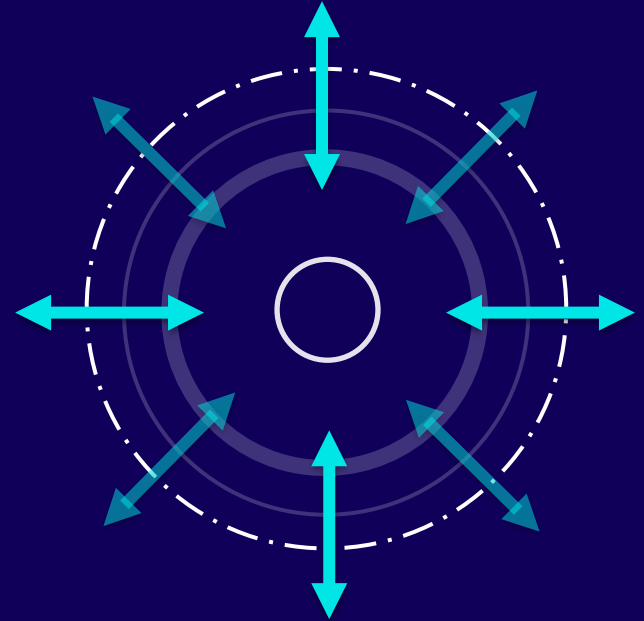
AFTER ULTRASOUND TREATMENT



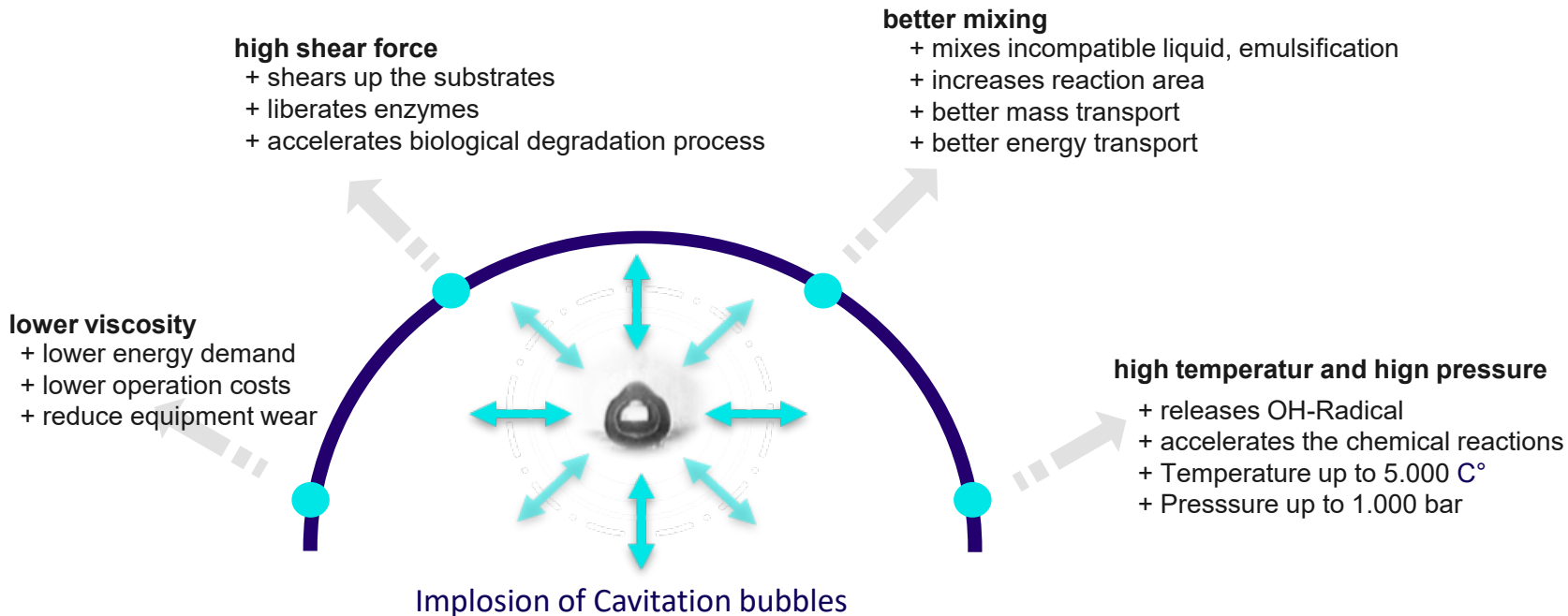
Ultrasound effectively destroys filamentous bacteria reliably and energy-efficiently – without chemicals.

Filamentous bacteria such as *Microthrix parvicella* frequently cause foam formation and can even lead to fermenter overflow. Ultrasound destroys filamentous bacteria reliably and energy-efficiently — without the use of chemicals.

Physical Principle



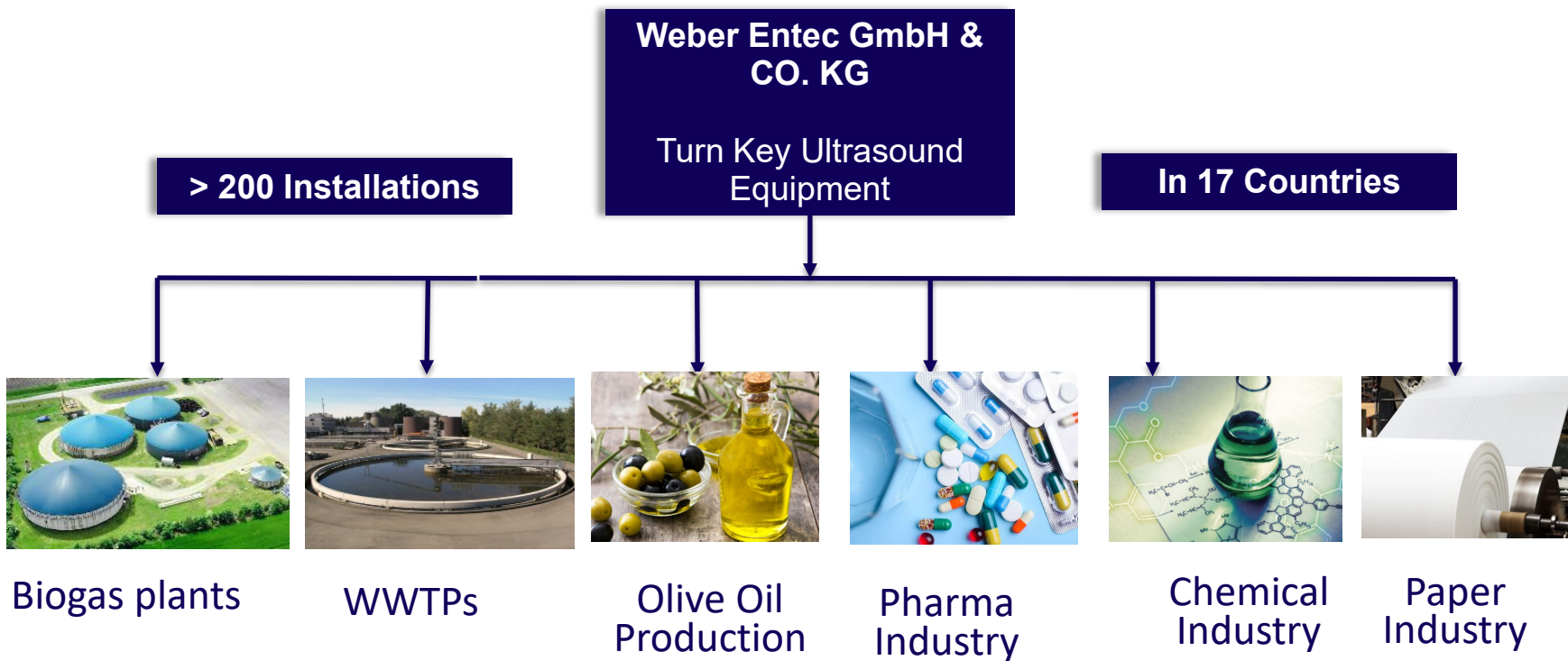
CAVITATION- BENEFITS



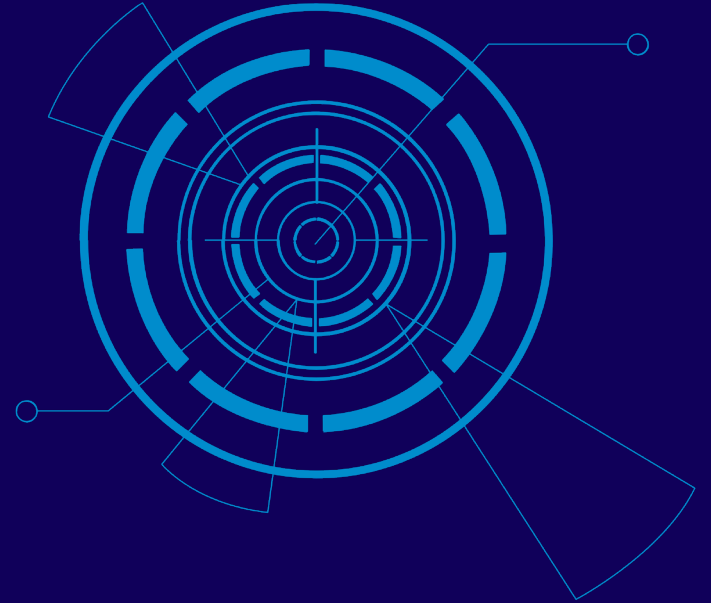


WEBER
ENTEC

WEBER ENTEC APPLICATIONS



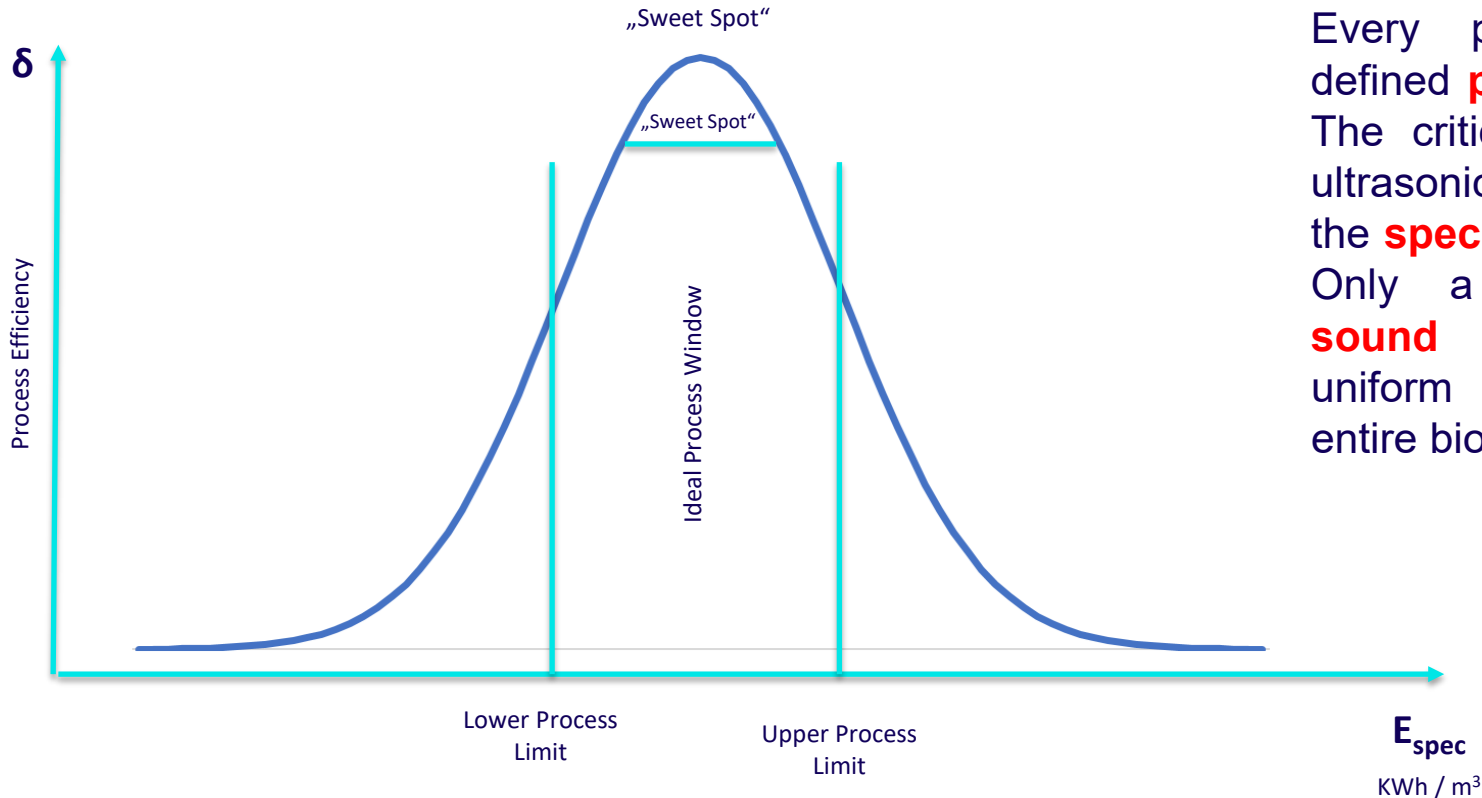
USP, Technical
advantages,
Product structure and
performance



SPECIFIC ENERGY – PROCESS WINDOW

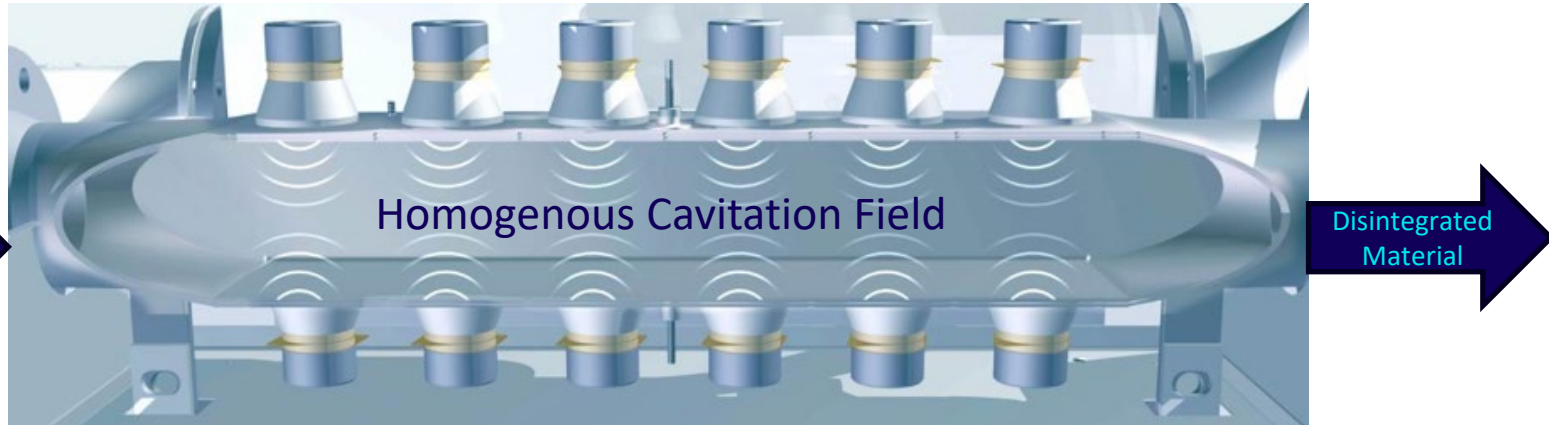


WEBER
ENTEC



Every process has a defined **process window**. The critical parameter in ultrasonic disintegration is the **specific energy** input. Only a **homogeneous sound field** ensures uniform treatment of the entire biomass.

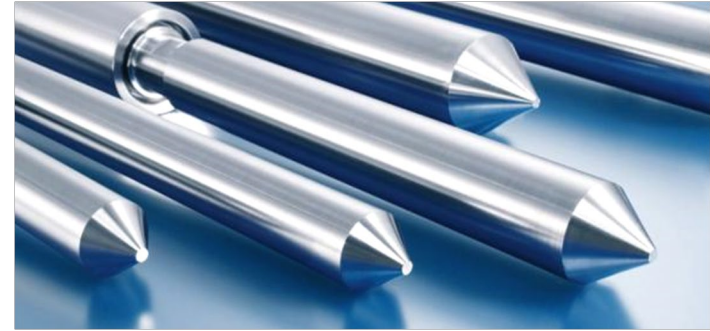
ULTRASOUND REACTOR BIOPUSH



- Clogging free, maintenance free, high durability
- Homogeneous treatment
- Defined intensity of treatment

TRADITIONAL ULTRASOUND TECHNOLOGY

- ▶ High erosion
- ▶ Inhomogeneous ultrasound field, due to spot irradiation
- ▶ Significant performance decrease due to erosion
- ▶ Thereby higher maintenance because permanent rinsing is necessary
- ▶ Reactors obstruct easily
- ▶ Higher operating and maintenance costs



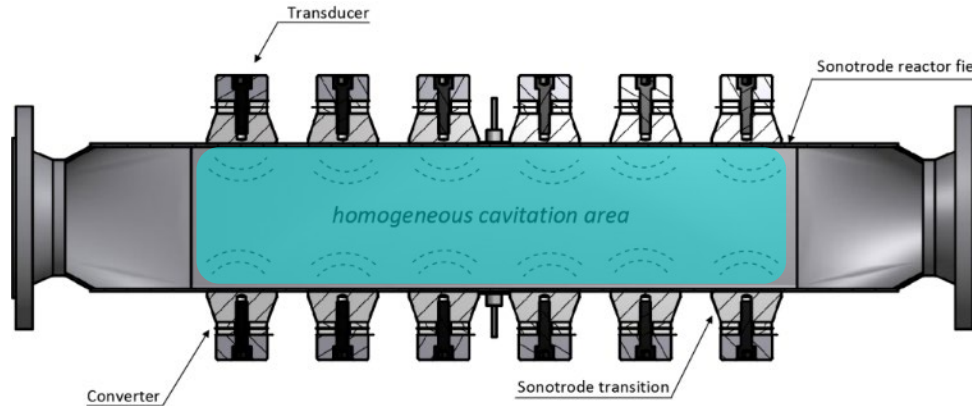
STD ULTRASOUND VS BIOPUSH IN FLOW



WEBER
ENTEC

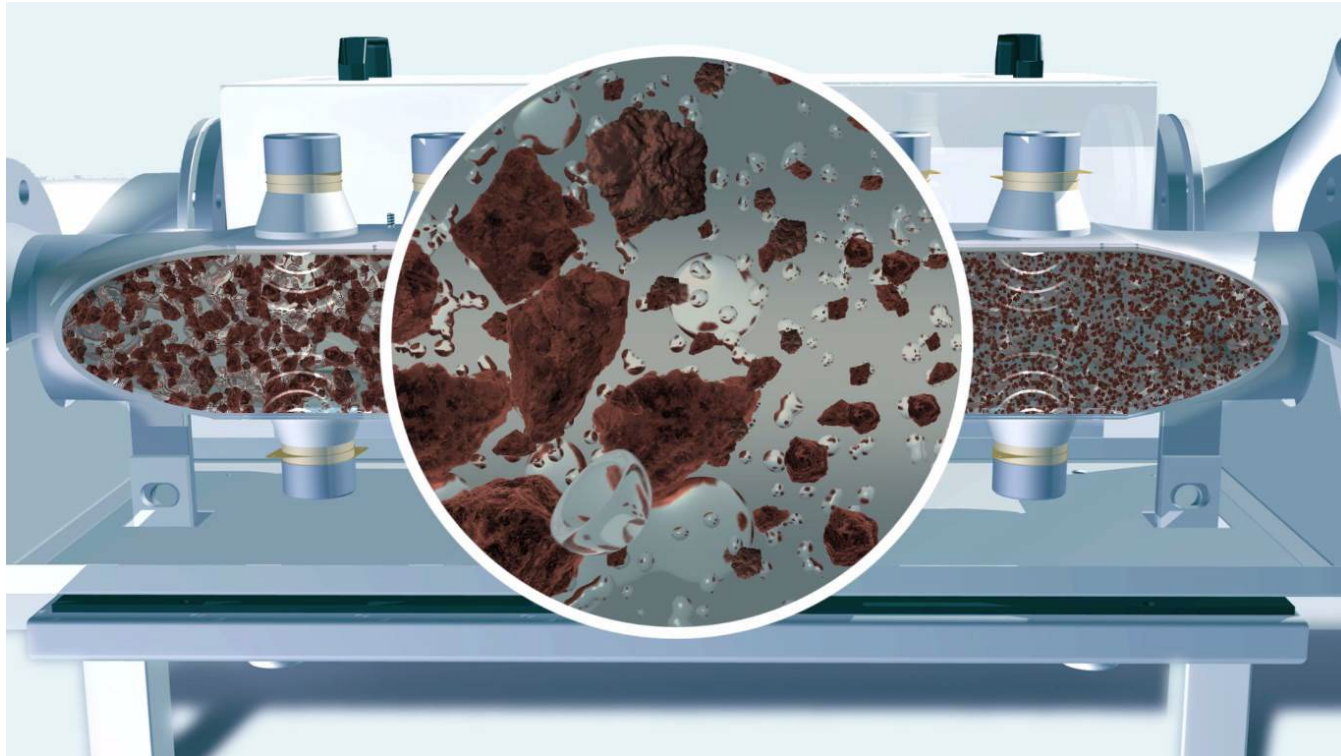


- **Hot Spots** – Inhomogeneous sound field
- High **erosion**
- **Poor** energy yield
- High **maintenance** / risk of clogging



- **Homogeneous** cavitation field
- Long **duration**
- Precise energy entry **control**
- No clogging – **process stability**

ULTRASOUND REACTOR BIOPUSH – THE NEXT GENERATION ULTRASOUND



GENERAL MACHINE DESIGN DESIUS



WEBER
ENTEC

1 Ultrasound unit

Cell rupture and surface
augmentation

Mobilization of
Exo-Enzymes

Sustained decrease
of viscosity in fermenter

Ultrasonic power
1.2 kW per unit

High durability –
up to 6 years and more



2 Mechanical Pre- treatment

Improved sound efficiency
and machine protection
RotaCut

3 Feeding pump

Excentric screw pump

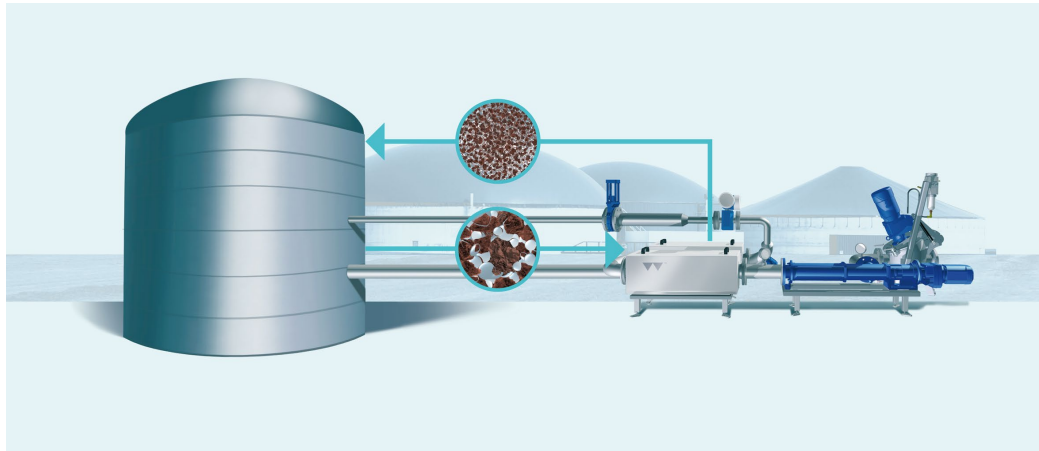
Sensors

- 4 2 x pressure gages,
2 x temperature sensor,
1 x flow meter

INTEGRATION IN BIOGAS PLANTS



WEBER
ENTEC

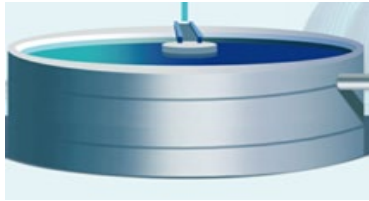


Main digester

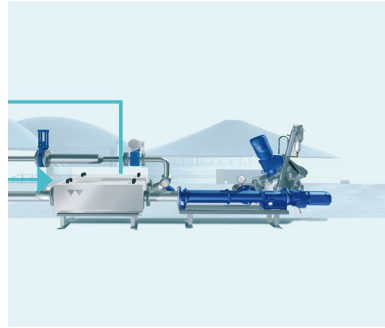
Ultrasound unit

In most cases, the ideal integration is a recirculation loop at the main digester. Biomass is continuously extracted, treated with ultrasound, and returned to the digester. Depending on the process design, recirculation from the secondary digester or feeding from hydrolysis directly into the main digester via ultrasound treatment can also be beneficial.

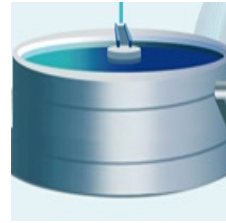
POSSIBLE INTEGRATION EXAMPLES IN WWTP



Prethickner



Ultrasound unit



Dosing Tank

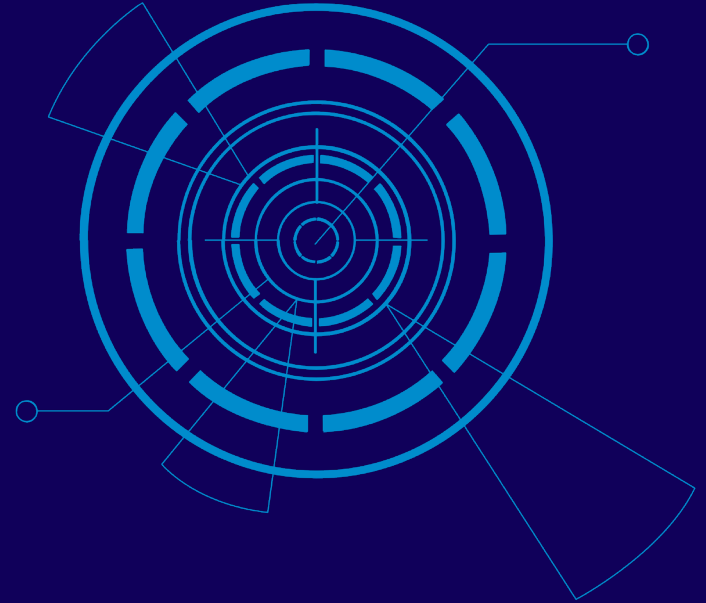


Dewatering

REFERENCelist AND CASE STUDIES

NOTE: WE HAVE NUMEROUS
FURTHER CASE STUDIES AND
REFERENCES. IN CASE OF
INTEREST PLEASE CONTACT
US AT:

MAIL@WEBER-ENTEC.COM



BIOGAS PLANT DENMARK



WEBER
ENTEC

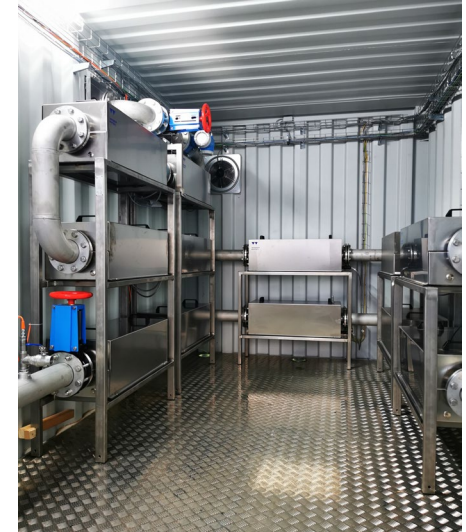


Location

Mansson

Ultrasound power

24 kW



BIOGAS PLANT DENMARK



WEBER
ENTEC

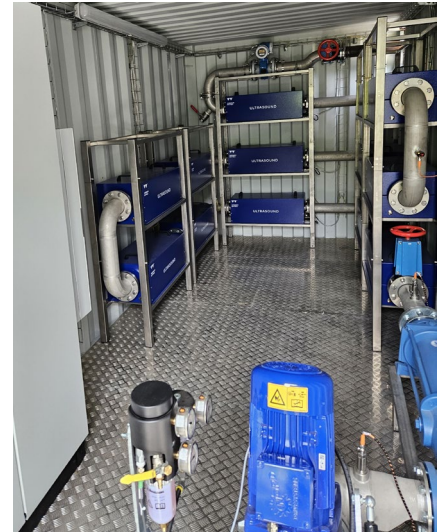


Location

Vaarst

Ultrasound power

78 kW



BIOGAS PLANT DENMARK



Location

Vaarst

Ultrasound power

78 kW

- ▶ 3 Ultrasound machines
- ▶ Each 13 ultrasound reactors
- ▶ Current feedstock: Manure, deep litter, food waste, solid biomass

BIOGAS PLANT DENMARK



Location

Midtfyn

Ultrasound power

158 kW

- ▶ 5 Ultrasound machines
- ▶ 4 containers with 17 ultrasound reactors
- ▶ 1 container with 11 ultrasound reactors
- ▶ Current feedstock: Manure, deep litter, crops, food waste

BIOGAS PLANT 250 KW RASTEDE

Target: Alternative feeding: Replace maize through grass

Location	Rastede
CHP	250kW
Ultrasound power	2 kW
Feedstock	Maize silage, Grass, slurry, manure, whole plant silage



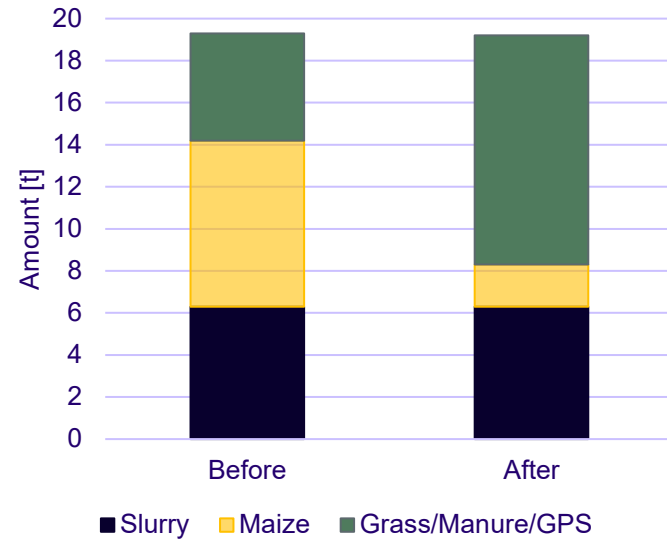
BIOGAS PLANT 250 KW RASTEDE

Base line: Maximum possible feed of grass is 4 t/d before getting problems at the biogas plant. 10t/d cheap grass are available

Result:

- 1) 10 t/d of grass can be fed now
- 2) reduction of feeding costs: **25%**
- 3) Operation of the biogas plant without any problems

Input before and after installation of ultrasound



BIOGAS PLANT 1250 KW GROSSENWIEHE

Target: Reduction of viscosity, saving of substrate

Location	Großenwiehe
CHP	2570 kW
Rated power	1250 kW
Ultrasound power	12 kW
Feedstock	Maize silage, Grass, Grain-whole plant silage



BIOGAS PLANT 1250 KW GROSSENWIEHE

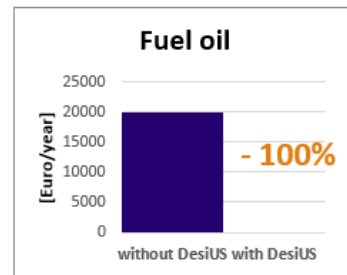
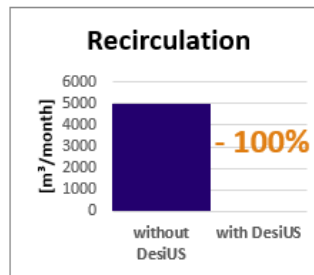
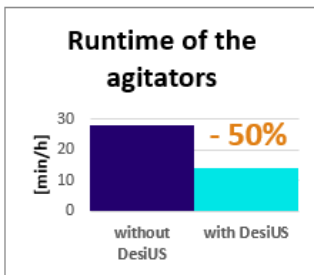
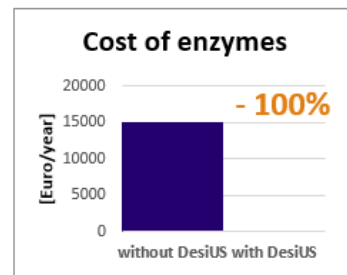
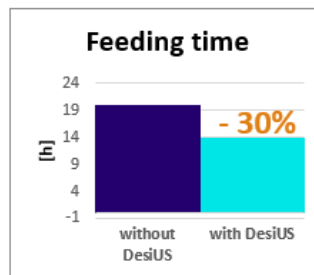
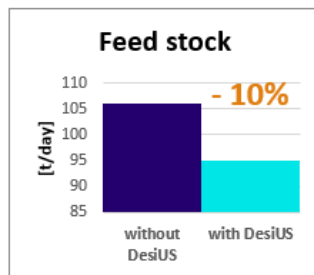
Result:

Several improvements to the biogas plant increase efficiency.

The overall process stability is improved. This leads to less down times at the biogas plant.

The heating network can now be fully supplied by the biogas plant in winter.

Production efficiency improvements





WEBER
ENTEC

WWTP – ALTENRHEIN SWITZERLAND

In the year 2013 a test plant with 2 kW ultrasound power was integrated at a Swiss WWTP with 80.000 population equivalents for a test period of one year. The effect of the ultrasound disintegration on the organic degradation of different substrates should be proved.



WWTP – ALTENRHEIN SWITZERLAND

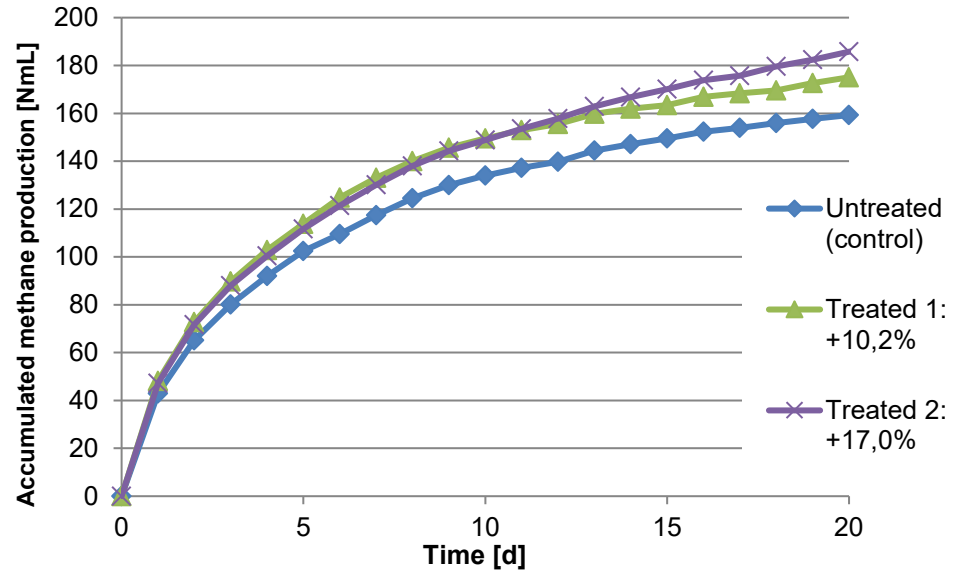
After one year of testing, the full scale implementation with an ultrasound power of 12 kW for treating digested sludge and co- substratum takes place in the year 2016.



WWTP – ALTENRHEIN SWITZERLAND

Result:

- ▶ 17% higher gas production
- ▶ Improved flow properties
- ▶ Reduced sludge



WWTP Altenrhein

BIOGAS PLANT 395 kW KLEVE

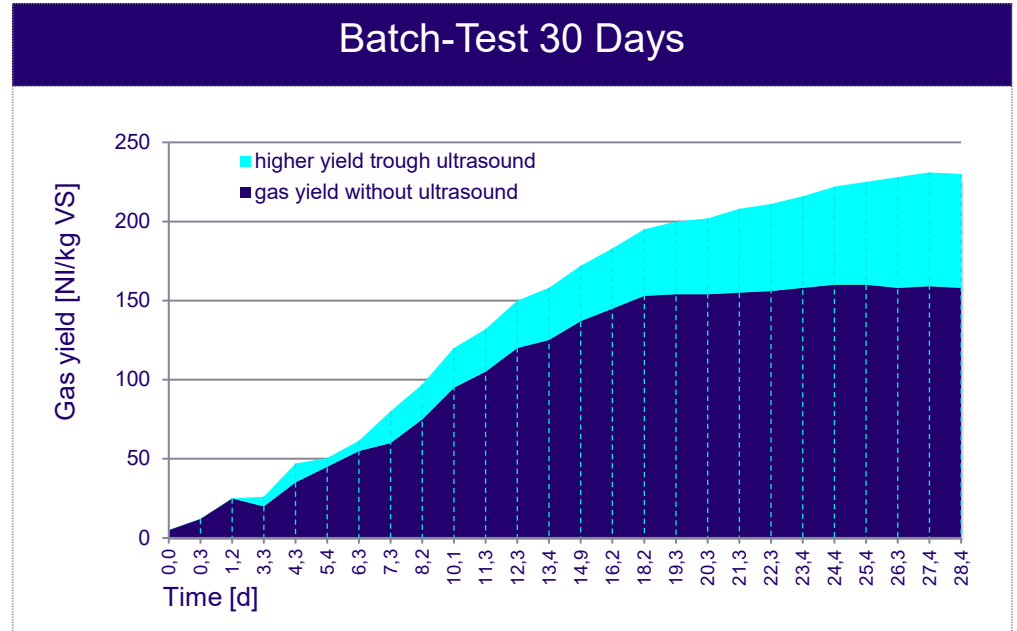
Target: Increase of biogas yield, reduction of feed stock (maize silage)

Location	D-Kleve
CHP	250 kW
Ultrasound power	2 kW
Feed stock	manure, maize silage, poultry manure



BIOGAS PLANT 395 kW KLEVE

Result: The generator operated at 450 kWh instead of 395 kWh before.



BIOMETHANE PLANT (~2MW_{EL})

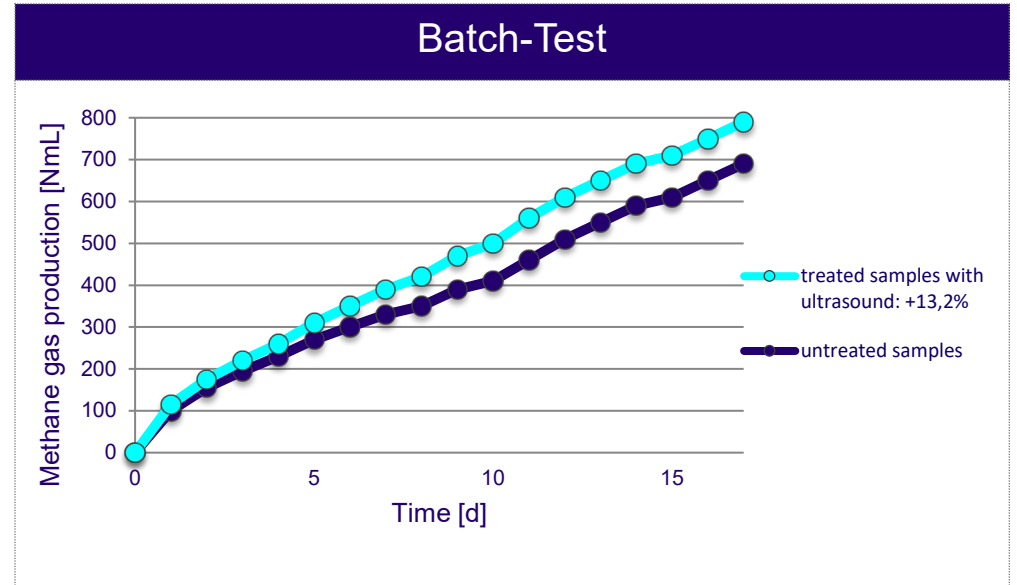
Target: Increase of efficiency – More biogas, less feed stock

Location	D-Mühlacker
Biomethane Nm ³ /h	2 x 500 Nm ³ /h
Ultrasound power	16 kW
Feed stock	maize silage



BIOMETHANE PLANT ($\sim 2\text{MW}_{\text{EL}}$)

- ▶ **Result:**
- ▶ More than 13% higher biogas production



BIOGAS PLANT 777 kW TECHENTIN

► **Target:** Increase of biogas yield, reduction of feed stock

Location D-Techentin

CHP 777 kW

Ultrasound power 4 kW

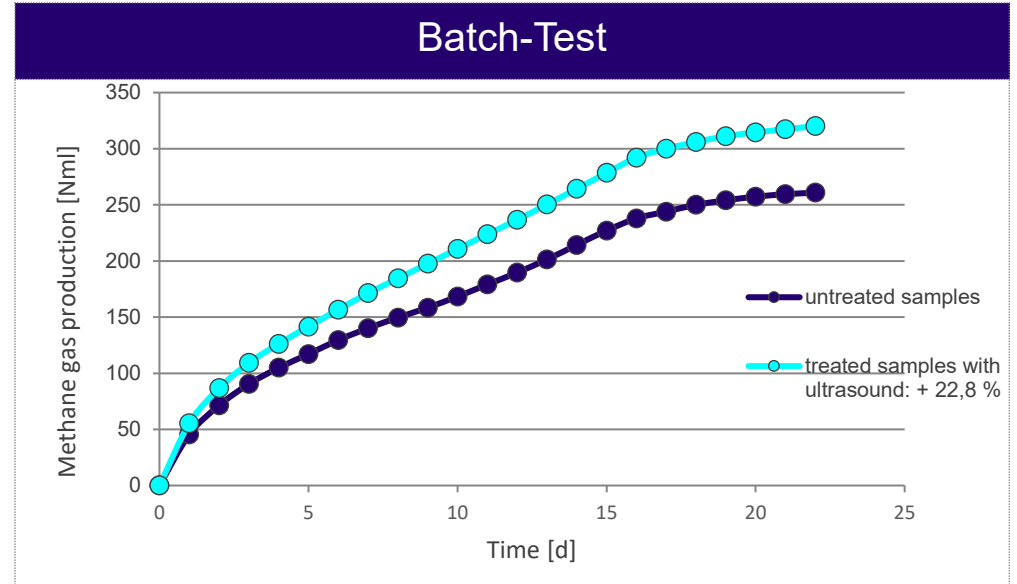
Feed stock maize silage



BIOGAS PLANT 777 kW TECHENTIN

Result:

22,8% higher biogas production



BIOGAS PLANT 250 kW RASTDORF

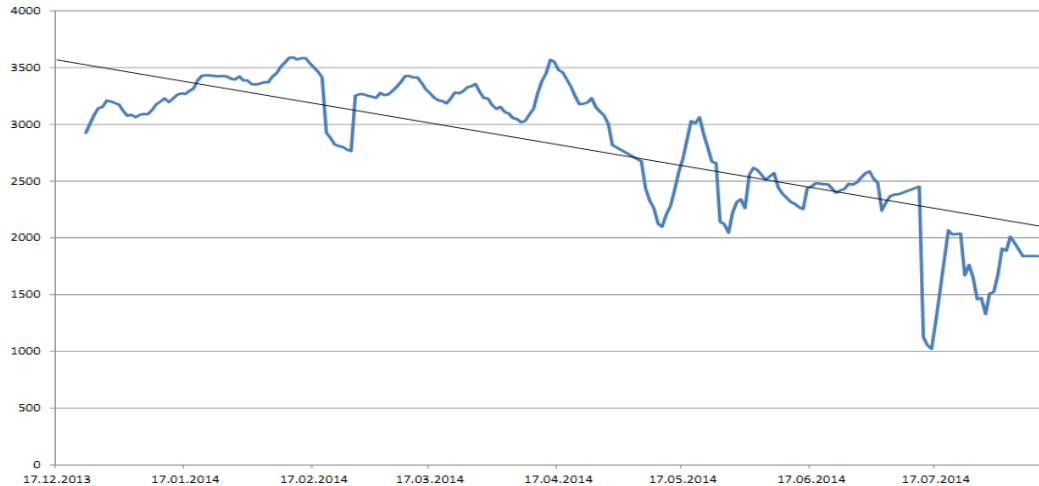
- ▶ **Target:** Preparation of the difficult substrate mixture

Location	D-Rastdorf
CHP	250 kW
Ultrasound power	4 kW
Feed stock	Cattle and horse manure, maize, catch crops



BIOGAS PLANT 250 kW RASTDORF

- ▶ **Result:** more homogenous substrate, reduced viscosity



Feeding VS after installation of disintegration plant in 7-days average

BIOGAS PLANT 999 kW MAGLIANO

► **Target:** Increase of efficiency – More biogas, less feed stock

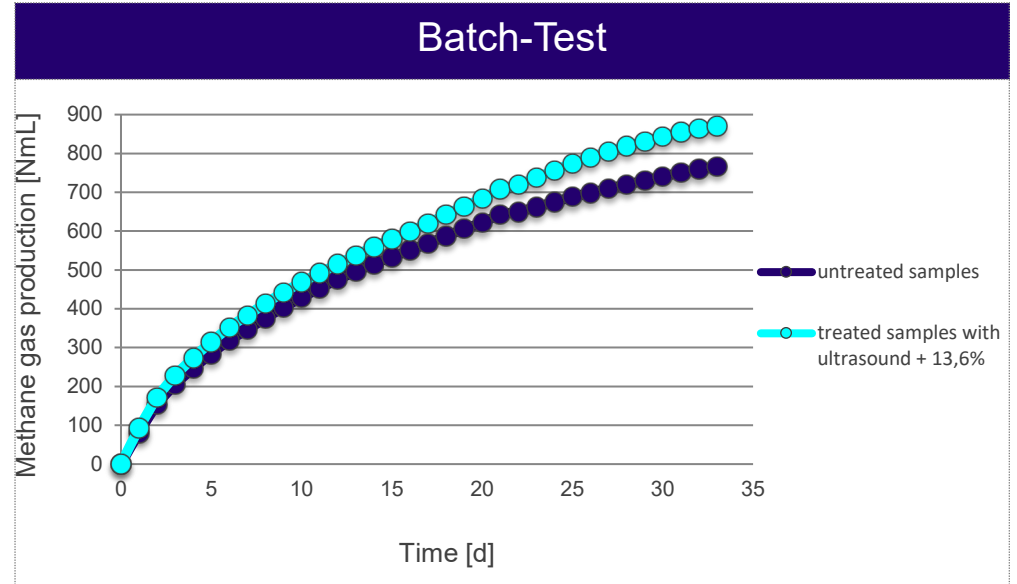
Location	I-Magliano i. d. Toscana
CHP	999 kW
Ultrasound power	6 kW
Feed stock	sorghum, maize silage, field beans, oats, clover, pasture grass



BIOGAS PLANT 999 kW MAGLIANO

Result:

More than 13% higher biogas production



BIOGAS PLANT 330 kW ROSENBACH

- ▶ **Target:** Increase of efficiency – More biogas, less feed stock

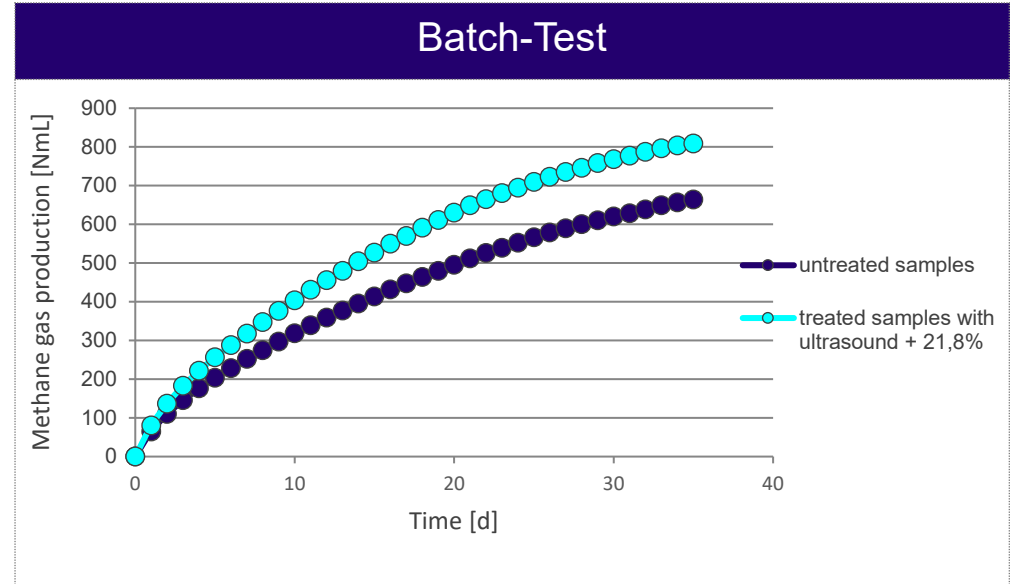
Location	D-Rosenbach
CHP	330 kW
Ultrasound power	2 kW
Feed stock	Maize silage, liquid manure



BIOGAS PLANT 330 kW ROSENBAACH

Result:

More than 21% higher biogas production



BIOGAS PLANT 1,8 MW

► **Target:** Reduction of viscosity and of feedstock

Location	Germany
CHP	1,8 MW
Ultrasound power	16 kW
Feed stock	Maize, beet, poultry manure liquid manure

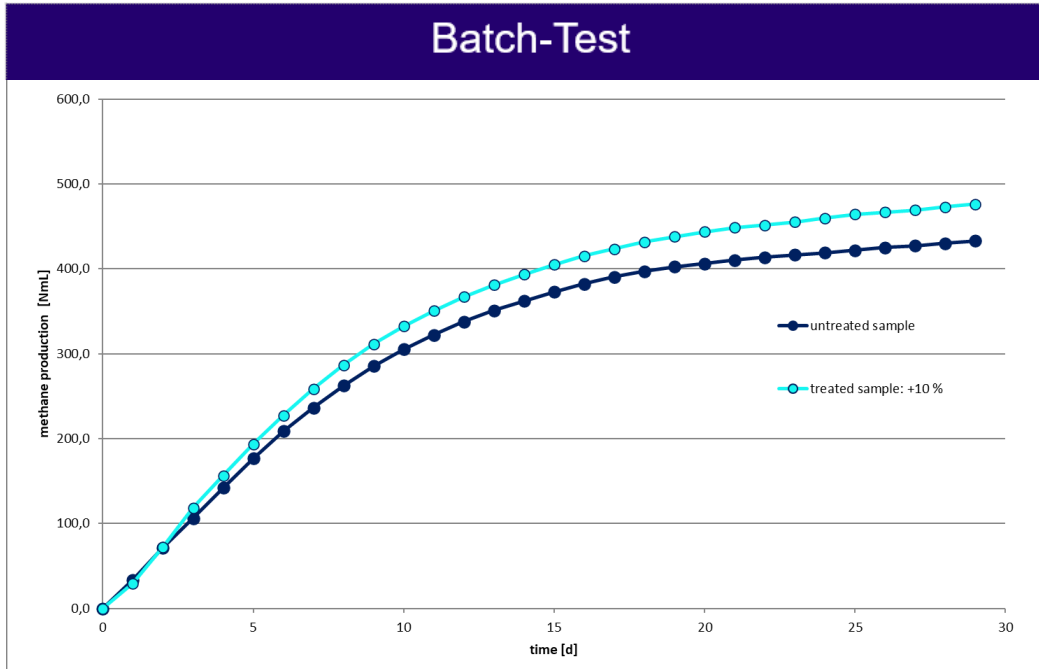


BIOGAS PLANT 1,8 MW



WEBER
ENTEC

- ▶ **Result:** 10 % more methane



BIOGAS PLANT 2,2 MW DENMARK

- ▶ **Target:** Reduction of viscosity, Increase of biogas production

Location	Denmark
CHP	2,2 MW
Ultrasound power	24 kW
Feed stock	Manure, vegetables, grass, sludge



BIOGAS PLANT 2,2 MW DENMARK

- ▶ **Target:** Reduction of viscosity, Increase of biogas production



BIOGAS PLANT 296 Nm³/h Netherlands

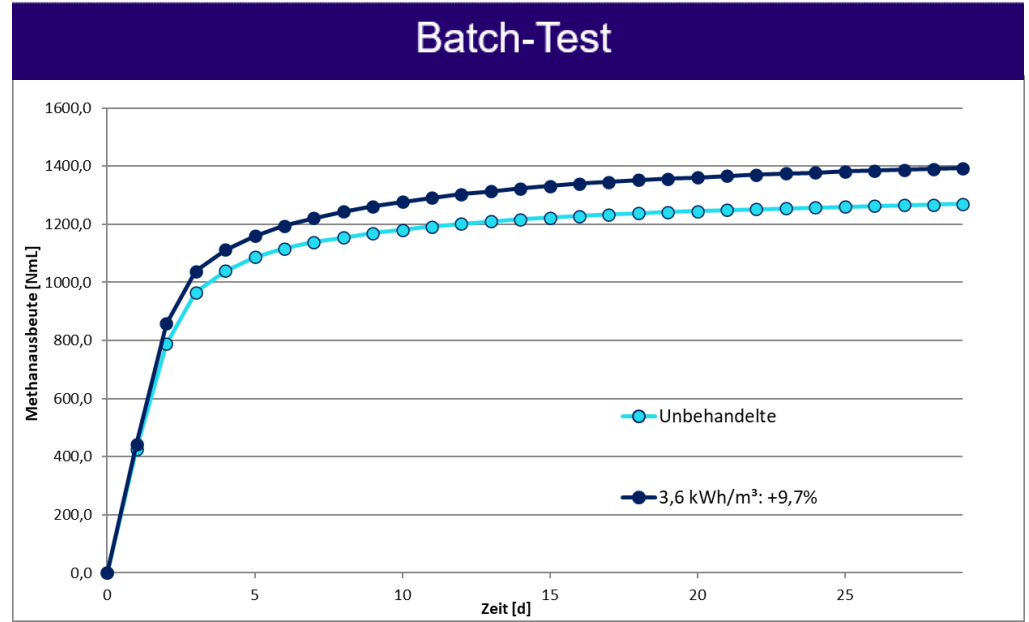
- ▶ **Target:** Erhöhung der Biogasproduktion,
Viskositätsreduzierung im Hydrolysetank

Location	Niederlande
Heizleistung	1,5 MW/h
Ultrasound power	8 kW
Feed stock	poultry manure, Milch-Konzentrat



BIOGAS PLANT 296 Nm³/h Netherlands

- ▶ **Result:** About 10 % higher gas yield



WWTP IN FRANCE

- ▶ **Target:** Increase of biogas production, Better grade of organic degradation, Reduction of disposal costs for sludge

Location	France
CHP	950 kW
Ultrasound power	10 kW
Feed stock	secondary & primary sludge, greases, external sludge



WWTP IN FRANCE

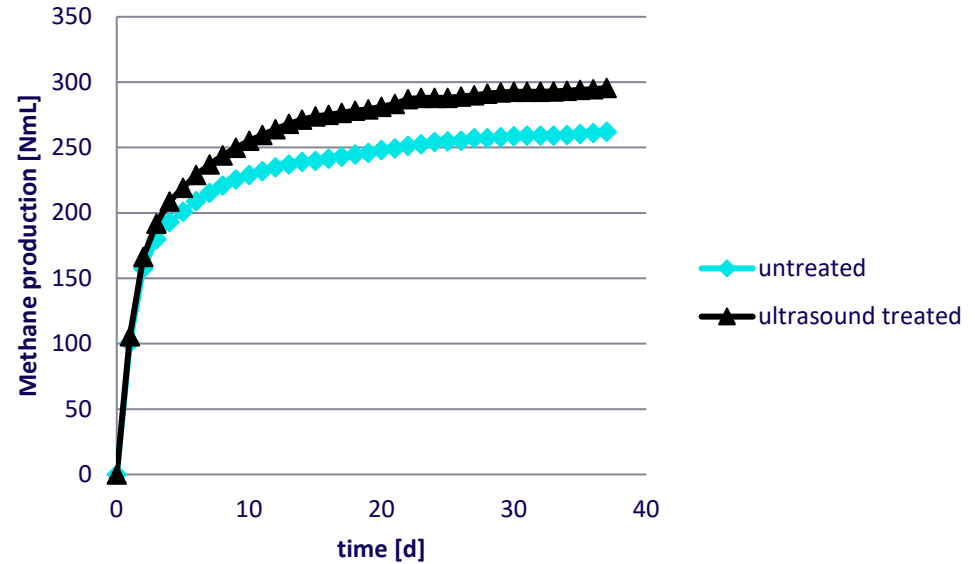


WEBER
ENTEC

- ▶ **Result:** About 13 % higher gas yield

Batch-Test

BMP Test Mont De Marsan



WWTP – MOSCOW, RUSSIA

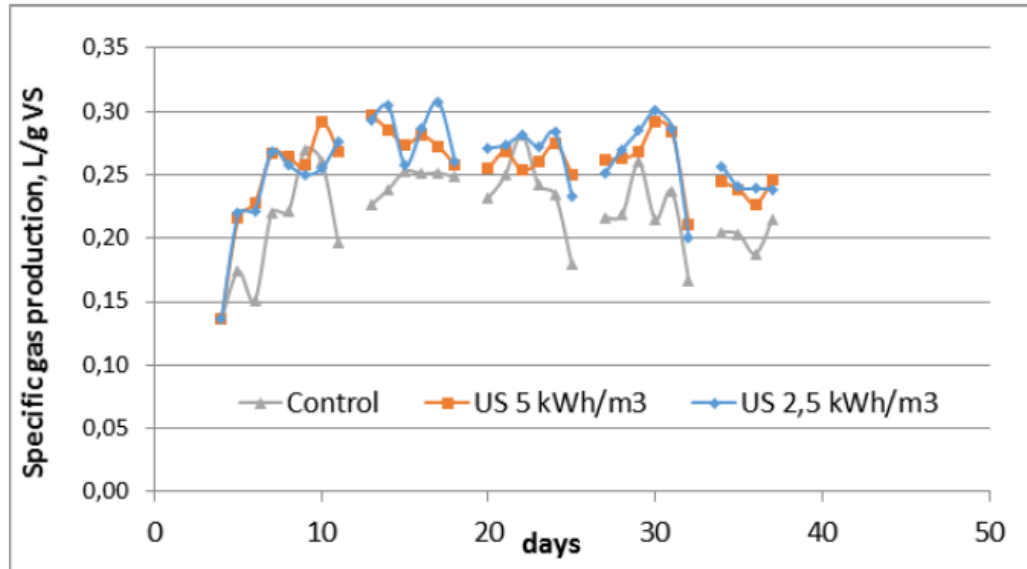
- ▶ **Target:** More biogas, reduction of disposal costs (less sludge)

Location	RUS-Moscow
Population equivalents	12.000.000
Ultrasound power	2 kW test plant



WWTP – MOSCOW, RUSSIA

► **Result:** The plant operator bought a test plant from Weber Entec. A laboratory in Moscow carried out tests and wrote a final report. An increase up to 17% of the gas yield of the ultrasound treated samples was confirmed.



WWTP SINGAPORE

- ▶ **Target:** More biogas, reduction of disposal costs (less sludge)

Location	Singapore
Population equivalents	1.500.000
Ultrasound power	32 kW

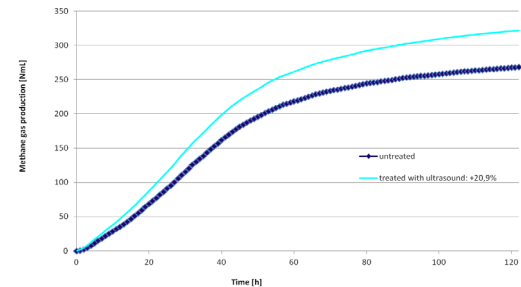
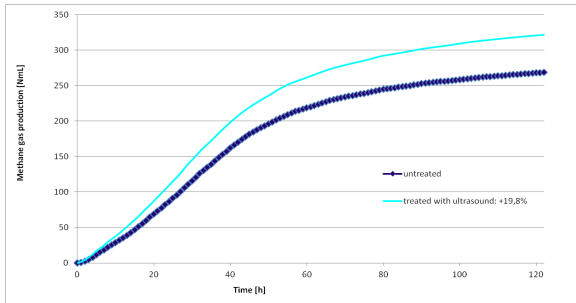
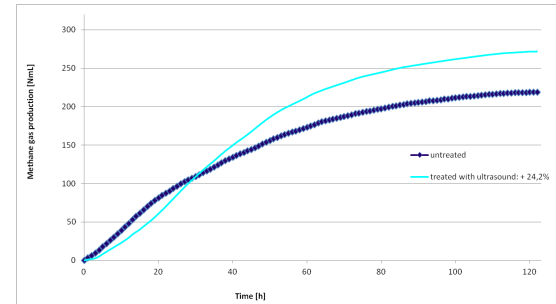
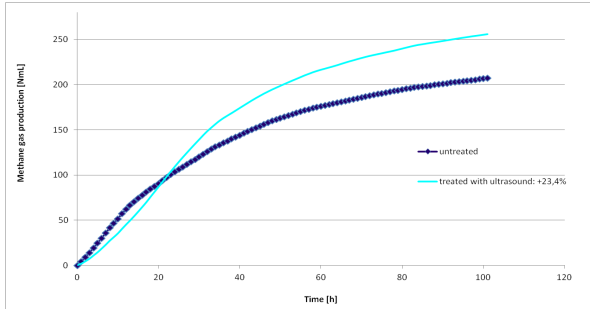


Over a period of 8 weeks, various samples were taken and the increase of gas yield of the ultrasound treated samples compared to the untreated samples.

A selection of these tests is to find on the next slide.

WWTP SINGAPORE

► **Result:** An independent laboratory confirmed the average performance increase as 22%.



WWTP ULLU PANADAN SINGAPUR



WEBER
ENTEC



WWTP TAIPO - HONGKONG

Target: More biogas, decrease of disposal costs (less sludge)

PE	900.000
----	---------

Ultrasound power	24 kW
---------------------	-------



Customer wanted to improve his plant. Decision for ultrasound disintegration.
Weber Entec won the tender for delivery of the turn key machine.

WWTP TAIPO - HONGKONG



WEBER
ENTEC



WWTP TAIPO - HONGKONG



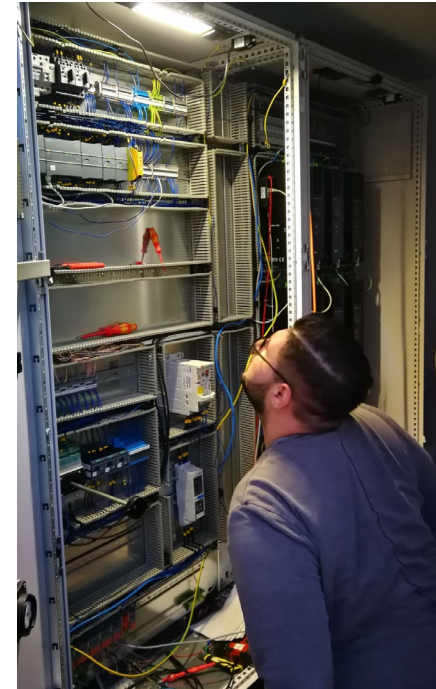
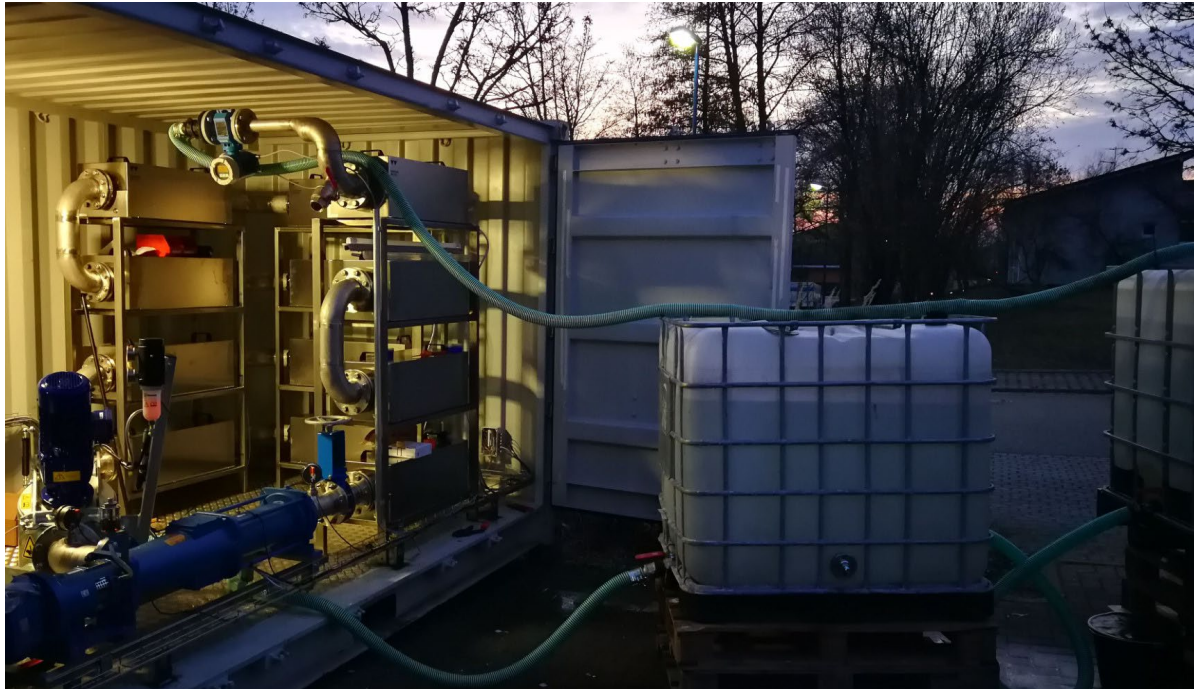
WEBER
ENTEC



WWTP TAIPO - HONGKONG



WEBER
ENTEC



WWTP KAUNAS, LITHUANIA

- ▶ **Target:** More biogas, decrease of disposal costs (less sludge), reduction of the fiber k

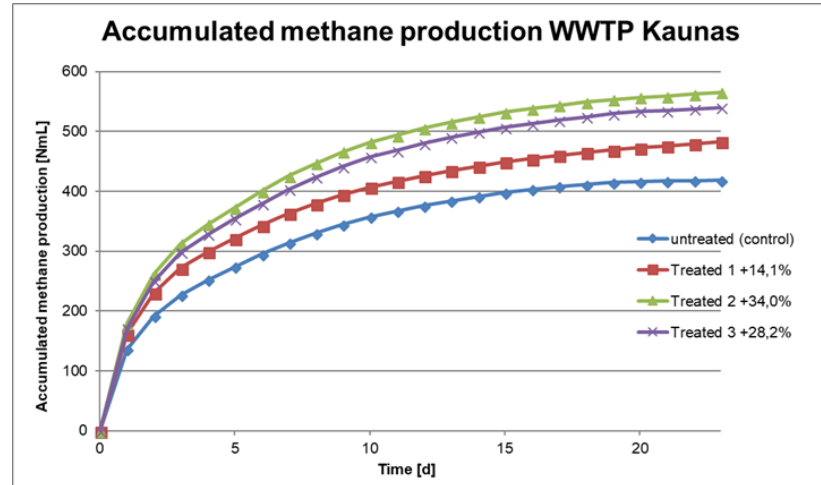
Location	LTU-Kaunas
Population equivalents	900.000
Ultrasound power	28 kW



Customer wanted to improve his plant. Decision for ultrasound disintegration. Weber Entec won the tender for delivery of the turn key machine.

WWTP KAUNAS, LITHUANIA

► **Result:** A laboratory carried out tests. An increase up to 34 % of the gas yield of the ultrasound treated samples was confirmed. Filamentous bacteria were significant reduced.



BIOGAS PLANT THAILAND



WEBER
ENTEC

Location TH - Surat Thani

Ultrasound power 6 kW

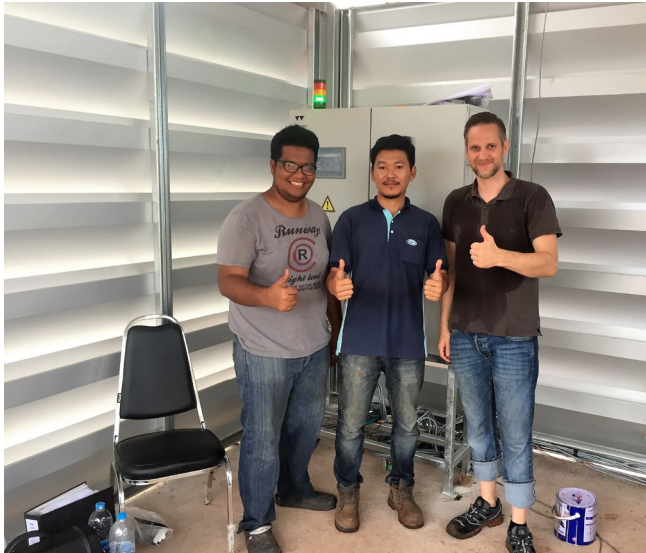
Feed stock POME,
Decanter cake



PALM OIL – BIOGAS PLANT THAILAND



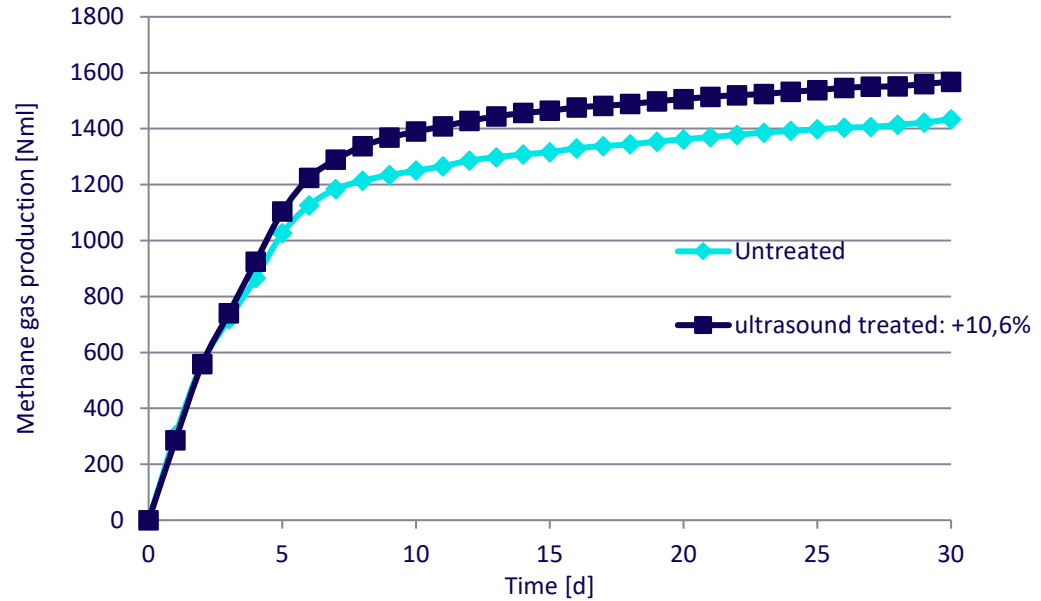
WEBER
ENTEC



BIOGAS PLANT THAILAND

Result:

- ▶ 11% higher gas production





YOUR DIRECT CONTACT PERSON



Management

CHRISTIAN EICHHORST

T +49 (0) 72 43/ 72 88 981

F +49 (0) 72 43/ 76 55 011

c.eichhorst@weber-entec.com



Technical Director / Head of R&D

ANTING GRAMS

T +49 (0) 72 43/ 72 88 982

F +49 (0) 72 43/ 76 55 011

a.grams@weber-entec.com



Engineering & Sales

PETER SÖRRIES

T +49 (0) 72 43/ 72 88 986

F +49 (0) 72 43/ 76 55 011

p.soerries@weber-entec.com



MANY THANKS!

Your Weber Entec Team

Weber Entec GmbH & Co KG

Siemenstraße 22
D-76275 Ettlingen

T +49 (0) 72 43/ 72 88 980

F +49 (0) 72 43/ 76 55 011

mail@weber-entec.com

www.weber-entec.com